

(19)

(12)



(10)
(45)

CN 10 52 732 B
2021.05.25

(21)

书1 书3 1

1.

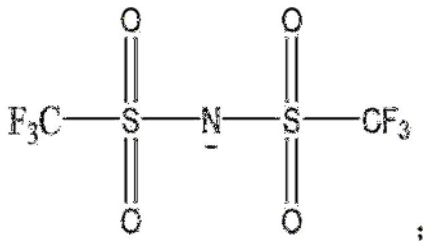
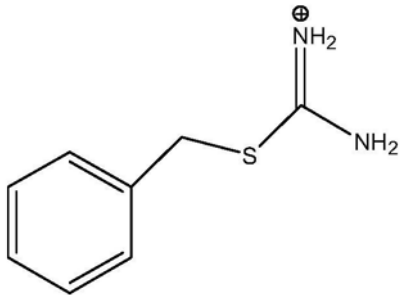
20 70

pH 2 12

1 100:1

S

S



S

S

3

60

30min

24h

S

99

2.

1

10 20mL

0.01 3mol /L

0.5

1mL

S

30 pH 2 10

1min

98

3.

2

C

[0001]

[0002]

[0003]

/

(1)

(2)

(3)

[0004]

[0005]

20 70

pH 2 12

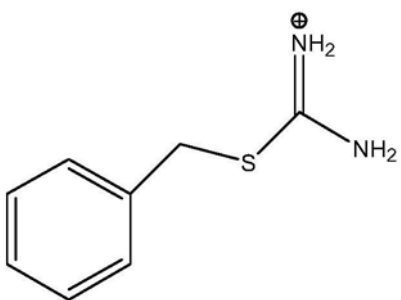
1 100:1

[0006]

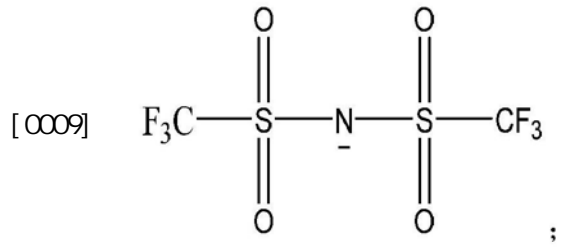
S

S

[0007]



[0008]



[0010] S S
 3 60 30min 24h S
 99

[0011] 10 20mL 0.01 3mol /L 0.5
 1mL S 30 pH 2 10
 1min 98

[0012]

C

[0013]

[0014]

[0015] 1 1 S ¹H NMR

[0016]

[0017] 1

[0018] S

30min 3 60
 24h S 99

[0019] 2

[0020] 25mL 10mL 2mol /L 0.5mL
 S 30 pH 3 1min

99

[0021] 3

[0022] 25mL 10mL 2mol /L C 0.5mL
 S 30 pH 3 1min

CN 10 52 732 B

C 99

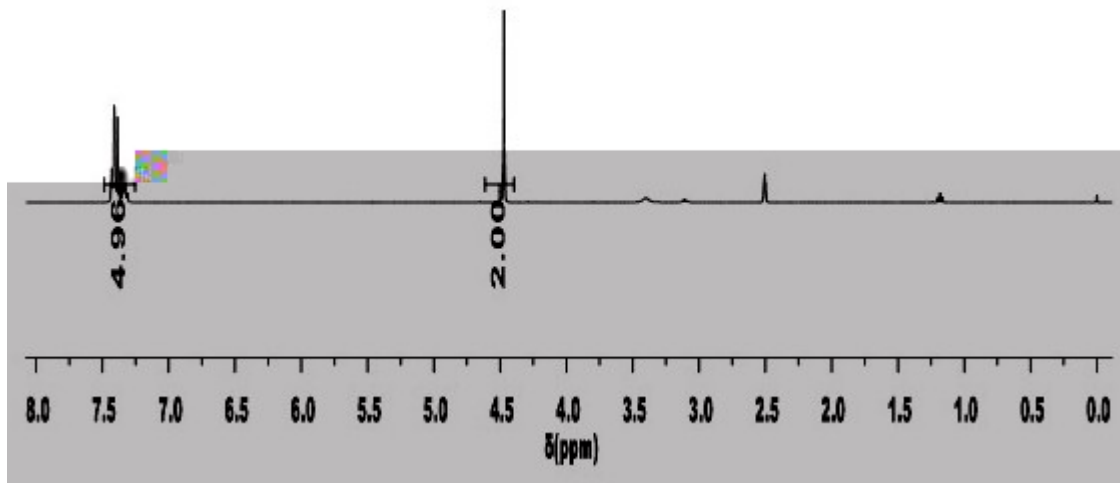
[0023] 3

1

[0024] 1

[0025]

--	--	--	--



1